

COMPANY PROFILE



Mayasem Infrastructure Project



MINAEAN 
CONSTRUCTION CORPORATION
AN AFFILIATE OF SHAPORJI PALLONJI

MINAEAN.COM

Listed on: TSX-V: MSP
FRA: NJAN



MINAEAN 
CONSTRUCTION CORPORATION
AN AFFILIATE OF SHAPOORJI PALLONJI



Table of Contents



CEO & Presidents Message	P. 2
About Minaean SP Construction	P. 3
Shapoorji Pallonji Group	P. 4
Group Healthcare Projects	P. 10
Group Education Projects	P. 13
Group Hospitality Projects	P. 16
Group Commercial Projects	P. 19
Group Residential Projects	P. 22
Group Sport & Leisure Projects	P. 25
Group Infrastructure Projects	P. 26
Group Retail - Mall Projects	P. 27
Group Water Projects	P. 28
Group Energy Projects	P. 29
AFCONS	P. 30
AFCONS Projects	P. 31
Sterling & Wilson	P. 36
Sterling & Wilson Projects	P. 37
Group Awards	P. 40

CEO PRESIDENT'S MESSAGE

Dear Stakeholders,

Minaean SP Construction Corp. is committed to build shareholder value by delivering innovative and cost effective construction solutions. People, Innovation, Respect and Integrity are our vital assets. These assets enable us to provide the highest standards in service, reliability, safety, and values in our industry.

This is an exciting time full of change and progress for Minaean SP Construction Corp. Having strategized and laid the foundation for the company to acquire large contracts with the support of its affiliate, Shapoorji Pallonji Group, through a model taking Minaean, as a Canadian corporation global, we are about to deliver the ultimate, what the share holders' have been thriving for. I thank our staff and Board members for supporting our plan on our new endeavours to expand in to the local market, build partnerships locally and globally that will have a lasting and positive impact on our growth. Our continuous efforts in the African continent

have shown to bear fruits, our commitment to the Republic of Cote D'Ivoire in advancing their healthcare capabilities are showing results. We are committed to advance the healthcare facilities all over Africa, specifically in the countries where the Canadian government is willing to support.

We're proud to be a part of the Shapoorji Pallonji Group which has a rich legacy and heritage of over 153 years. Within this heritage our employees are of paramount importance to our success, by leveraging their expertise we can venture with confidence in challenging operating environments. With their support we are confident to execute projects of any size and complexity successfully.

With the ongoing support of our employees, shareholders and the Shapoorji Pallonji Group, I am confident to say that Minaean SP Construction Corp. is ready to face the challenges and declare achievements as the company moves forward.

Mervyn Pinto
President and CEO



Mervyn Pinto,
President and CEO of
Minaean SP Construction Corp.,
" I am confident to say that
Minaean SP is ready to face
the challenges and declare
achievements as the company
moves forward"



Minaean SP



Minaean SP Construction Corporation

- A Canadian corporation, an affiliate of Shapoorji Pallonji Group - General Contractor with global operations.
- Specialized in Design Build Construction projects and innovative building technologies including Light Gauge Steel Quick Build Construction systems.
- A publicly Listed corporation on TSX Venture Exchange (TSXV: MSP)
- Duly supported by Canadian crown corporations - Trade Commissioner Services, Canadian Commercial Corporation and Export Development Canada.
- North American Business Development and Execution arm of SP International – SP Group with over \$ 6 Billion revenues - with offices all over India, Middle East, Africa and Americas.

Minaean SP Construction Corp. focuses on development of major infrastructure and construction projects in:

- North America – Canada and USA
- Latin America – Costa Rica, Panama, Peru, Colombia, Bolivia, and Ecuador.
- Africa – Ghana, Cote D'Ivoire, Cameroon, Tanzania, Namibia, South Africa, Gabon and Nigeria.
- Asia – India, Vietnam, Cambodia, Laos and Myanmar.

Minaean SP Construction Corp. focuses on development of projects based on:

- Government-to-Government (G2G) sole sourcing projects with the support of Canadian Commercial Corporation and Export Development Canada.
- PPP Healthcare – Through a consortium develop, design/build, finance and operate major Healthcare Projects.
- General Contracting projects – Engineering, Procurement & Construction.
- Tendering for large infrastructure and construction projects in North America through a consortium

Applications of the Light Gauge Steel Quick Build Construction systems:

- Residential: Bungalows, Low-rise & Mid-rise Apartment Buildings, Affordable Housing, Hotels.
- Commercial: Primary Health Centers, Educational Institutes, Sports Facilities.
- Industrial: Office & Administrative Blocks, Small Warehouses, Canteens.
- General: Additional Floor on Existing Structure, Mezzanine floors, Internal Walls & Partitions.

Shapoorji Pallonji



Our Mission

"Fostering an environment that helps in the creation of knowledge and its application to work, we seek to excel in all our business activities and strive to build Shapoorji Pallonji into a creative organization."

Our Vision

"Shapoorji Pallonji & Co. Ltd. will be the company of first choice in the Construction Industry. We shall be driven by our commitment to Customer Satisfaction."



Shapoorji Pallonji

About us

About a century and a half ago, a small Indian company, Littlewood Pallonji & Company was commissioned to build a water reservoir for Mumbai (then Bombay) to feed the water needs of citizens of Bombay. Today, with over 65,000 professional employees and a presence in more than 20 industries and more than 60 countries, Shapoorji Pallonji has evolved and grown exponentially into multiple business segments with a progressive outlook and a thoroughly professional approach.

Group Overview

- **Widely Diversified Business Portfolio focusing on Infrastructure and Construction**
- **Rich Legacy of over 153 Years, recipient of multiple awards ranking FIRST in various categories.**
- **Group Turn-Over of over US\$ 6 Billion, specialized in Healthcare, Hospitality, Ports, Rail and Renewables.**
- **Global Reach in 60+ countries; Spanning Asia & Middle East, Africa and the Americas**
- **Over 65,000 Employees; Specialized in Design & Build**
- **20+ Major Group Companies serving 25 Industries**

Business Lines of our Interest

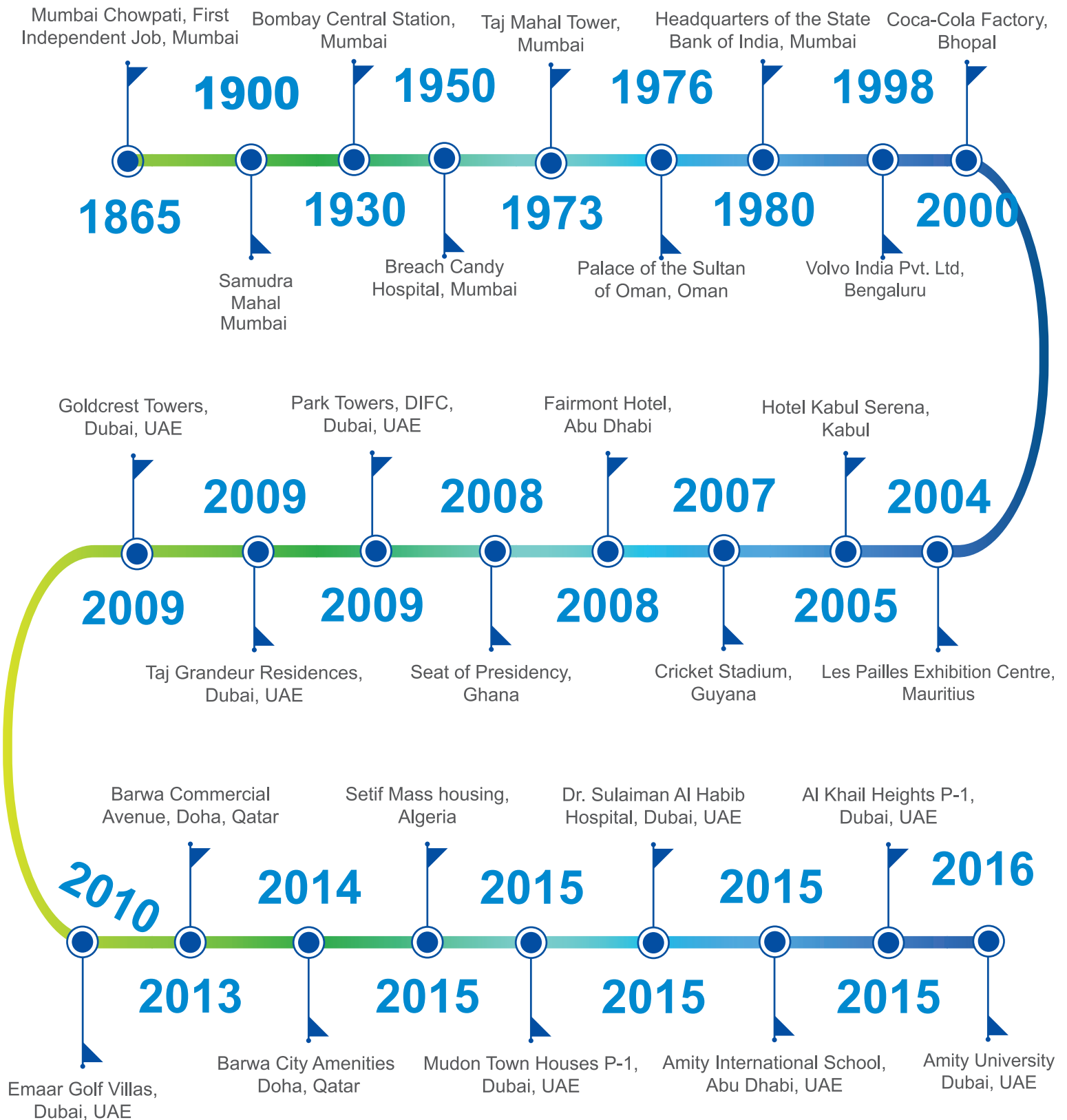
- Commercial, Residential, Industrial, Healthcare, Hospitality, Sports & Leisure, etc.
- Large-Scale Infrastructure and Complex Transportation Projects such as Roads, Ports, Airports.
- Rail, Metros, Bridges, Tunnels, Dams, Irrigation, Water Purification etc.
- Power Projects including Solar, Hydro and Thermal (both for EPC and for development).
- Oil and Gas Infrastructure such as LNG terminals and Refineries.
- FPSOs (as also allied offshore structures such as FSRU and FLNG) etc.



Group Presence



Group Legacy



Group Companies

 **ENGINEERING & CONSTRUCTION**



Flagship Contracting Company providing Engineering & Construction services

 **REAL ESTATE**



One of the most prominent Real Estate Developers in India and UAE

 **EPC**



Leading 'Engineering, Procurement and Construction' service provider in the field of Power, Metals & Minerals and Water Desalination Projects

 **INFRA**



Owner and Operator for infrastructure assets like, Road, Port, Power Plant etc. (through PPP)

 **OIL & GAS**



A premier global company in the oil & gas supply chain industry encompassing floating solutions and regasification

 **AFCONS**
AFCONS INFRASTRUCTURE LIMITED



Leading Infrastructure Construction arm for Marine, Highway, Bridge, Tunnel, Metro, Rail, LNG, Oil & Gas, Hydro Sectors

 **OSCO**
BUILT ON TRUST



Construction, Integrated Facility Management & Associated Services

 **FORBES**



Engineering, Shipping & Logistics and Transaction Management Solutions provider

 **MINAEAN**
CONSTRUCTION CORPORATION
AN AFFILIATE OF SHAPOORJI PALLONJI



Minaean SP is the North-American Business Development arm of SP. for government-to-government contracts and innovative construction technologies

 **STERLING AND WILSON**



Leading service provider for MEP Services, Solar Power, Diesel Generators, Distributed Power and Co-Generation, etc.

 **EUREKA FORBES**
Your friend for life



Leading provider of water purifiers, cleaning products / systems and water projects

 **FAB**



Facade and glazing solution provider for all kinds of buildings

 **AGRI**



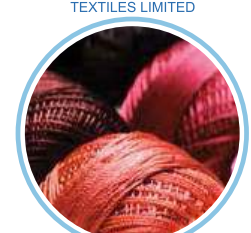
Participation in Agriculture & bio fuel sectors; contributing to the socio-economic development

 **INVESTMENT ADVISORS**



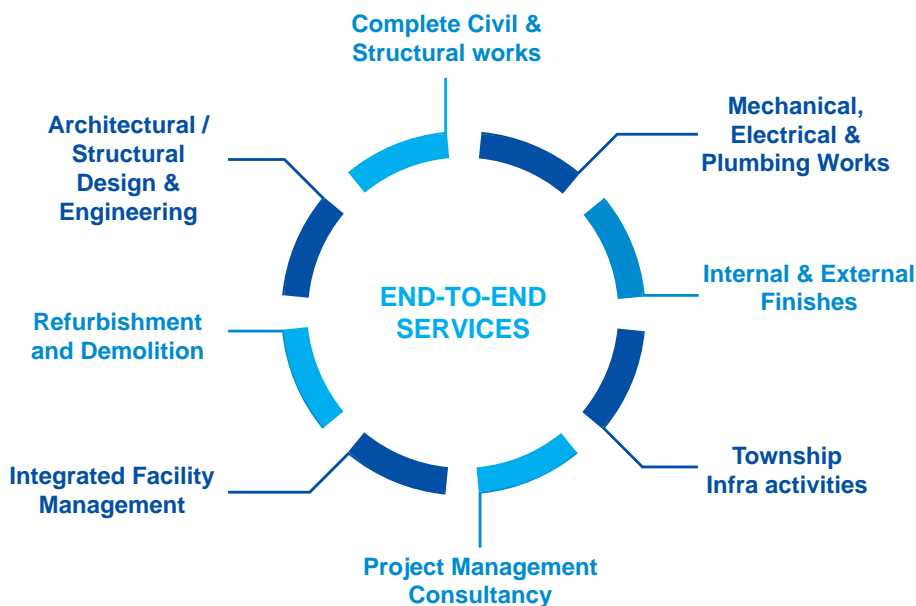
Venture into real estate investment advisory services and complements SP's existing real estate development & contracting businesses

 **GOKAK**
TEXTILES LIMITED



Manufacturer of all types of Yarn Canvas, Terry Towels and also sewing threads

Group Expertise



SP International today has grown to a fully integrated company to provide end-to-end one stop solutions for engineering, construction and its associated services. It possess all necessary in-house capabilities including a full-fledged 'Design Studio', Integrated Facility Management, 'Interior Fit Out' and 'Mechanical, Electrical and Plumbing (MEP)' divisions.

As a strategy, we strive for 'not just' meeting, but exceeding client's expectations through various innovative and value added initiatives during the project execution phases.

Group Projects

HEALTHCARE:

Ongoing construction - Approximately 8200 Beds

Medanta Hospital, 500 Beds	Patna, India	Kings College Hospital, 100 Beds	Dubai, UAE
Medical Colleges (3) Jharkhand State	Jharkhand, India	Ain Defla Hospital, 240 Beds	Ain Defla, Algeria
Christian Medical College, 1500 Beds	Vellore, India	Al Sabah Hospital, 617 Beds	Kuwait City, Kuwait
Aravind Eye Hospital, 630 Beds	Chennai, India	Cancer Hospital	Lagos, Nigeria
Medical Colleges (2) Govt. of Odisha	Odisha, India	Malta Hospitals, 1150 Beds	Malta
AIIMS Medical Inst. and Hospital, 500 Beds	Jhajjar, India	Al Noor Hospital, addition of 129 Beds	Abu Dhabi, UAE
Cancer Hospital and Institute, 500 Beds	Lucknow, India		
Super Specialty Hospital, 500 Beds	Safai, India		
Obstetrics & Gyneacology, 300 Beds	Safai, India		
West Bengal Medical Services, 6 Hospitals, 2500 Beds			

Completed Projects - 13,678 Beds

Bombay Hospital Trust, 600 Beds	Mumbai, India
Breach Candy, Mumbai, 173 Beds	Mumbai, India
Colombia Asia Hospital, 100 Beds	Ghaziabad, India
Colombia Asia Hospital, 100 Beds	Mysore, India
Jupiter Lifeline Hospital	Thane, India
Lata Mangeshkar Medical Fdn. I, 450 Beds	Pune, India
Lilavati Hospital, 300 Beds	Mumbai, India
Max Devki Hospital, 450 Beds	New Delhi, India
TATA Memorial Hospital, 500 Beds	Mumbai, India
TATA Medical Centre, 150 Beds	Kolkata, India
Wockhardt Life Sciences, 225 Beds	Mumbai, India
Wockhardt Hospital, 350 Beds	Kolkata, India
Eternal Heart-care Centre, 200 Beds	Jaipur, India
Narayan Hospitals Pvt. Ltd., 300 Beds	Ahmedabad, India
Apollo Hospitals, 150 Beds	Nashik, India
Indraprastha Apollo Hospital, 1000 Beds	Delhi, India
Lata Mangeshkar Medical Fdn. II, 450 Beds	Pune, India
Haryana Medical College, 500 Beds	Mewat, India
TATA Medical Centre Trust, 400 Beds	Kolkata, India
Corniche Maternity Hospital, 300 Beds	Abu Dhabi, UAE
Apollo Hospital, 500 Beds	Mumbai, India
Bombay Hospital Trust, 600 Beds	Jaipur, India
Bhagwan Mahavir Jain Trust, 260 Beds	Bangalore, India
Maternity Hospital, 150 Beds	Douera, Algeria
Dr. Sulaiman Al Habib Hospital, 145 Beds	Dubai, UAE
West Bengal Medical Services, 12 Hospitals, 5000 Beds	



Kings College Hospital - Dubai, UAE



Al Noor Hospital - Abu Dhabi, UAE

AlSabah Hospital

The facility provides one of the largest Emergency Department & Intensive Care Units in Kuwait. The 617 bed trauma hospital comprising of 105 ICU rooms, 19 Operation Theatres and 3000+ rooms are equipped with the latest technology systems and specialized medical equipment. This hospital also includes VIP suites, Special Security System, dedicated elevators and Helipad. The Car Park building which is designed as a Pre-cast structure will have a capacity of 1500 cars.

Key project details:

Project name: Study, Construction, Equipment, Furnish, and Maintenance Management of the New Al Sabah Hospital.

Location: Al Sabah Medical Sector, Kuwait City.

Client: State of Kuwait, Ministry of Health

Type of Tender: Local Tender in Partnership with Al Sager

Capacity: 617 Beds

Project duration: 1461 Days (48 Months)

Site Surface: 88,710 M2

Building Surface: 180,000 M2 + 85,000 M2 Parking and Facilities

Contract Value: 178,990,000.00 Kuwait Dinar equivalent to US\$ 635.14 Million



Malta Hospitals

SP Group through Vitals Global Health who is the PPP leader, was awarded with a contract for the construction and renovation of three hospitals in Malta. The total project value is estimated at approximately € 210 million. The involvement of Minaean SP Construction Corp., is regarding the development of the construction contract for Shapoorji Pallonji International.

The project consists of the construction and renovation of three hospitals: The Gozo General Hospital is a 450 bed teaching hospital and will have the Bart's Medical College on campus - New construction. St. Luke Hospital is a specialized rehabilitation and traumatology hospital 350 Beds - Renovation. Karen Grech Hospital is a geriatric hospital of 350 Beds - Renovation.



Corniche Maternity Hospital - Abu Dhabi, UAE



Apollo Hospital - Nasik, India



Jupiter Lifeline Hospital - Thane, India



Maternity Hospital - Douera, Algeria



Dr. Sulaiman Al Habib Hospital - Dubai, UAE



Ain Defla Hospital - Ain Defla Algeria



Cancer Hospital - Lagos, Nigeria



Lekki Hospital - Lagos, Nigeria



Children's Hospital - Ghana

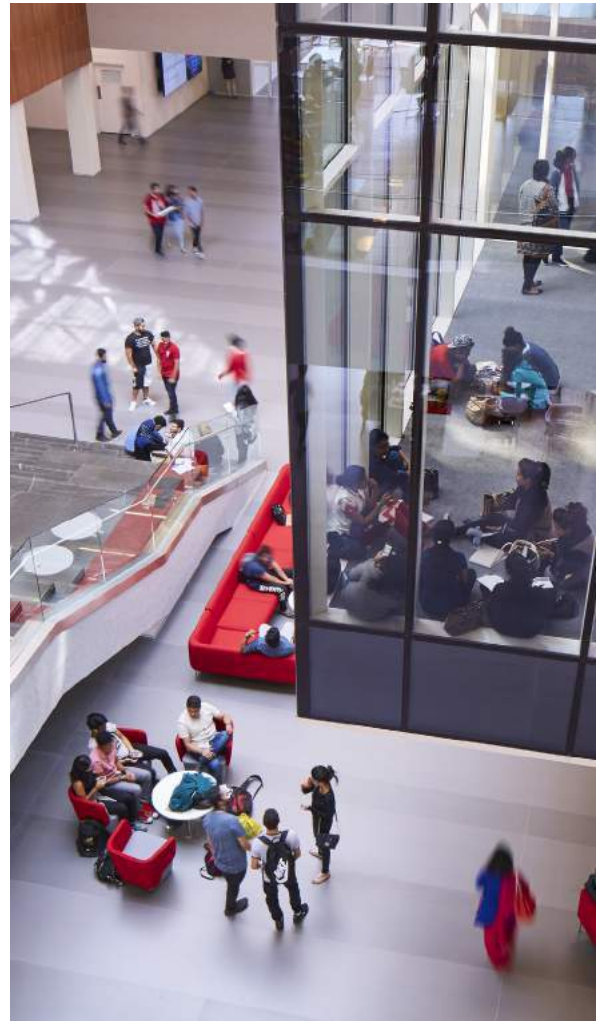


Group Projects

EDUCATION:

University of Doha - Pharmacy College
 University Kuwait
 University - (2) 6000 & 20.000 Students
 Commander College
 India School of Business
 Indian Council of Medical Research
 Indian Institute of Technology (2)
 Indian Institute of Space Science and Technology
 Indian Institute of Information Technology
 National Institute of Technology
 National Trust for the Handicapped Training Inst.
 National Institute of Bank management
 International Institute of Information Technology
 Confederation of Indian Industry Inst. of Quality
 Boys and Girls School, Barwa City
 Delhi Public School
 American Embassy School (2)
 Aga Khan Academy
 Birla Institute (4)
 ICICI Knowledge Park
 Residential School
 Symbiosis Knowledge Village
 Samundra Institute of Maritime Studies
 KRN Education Pvt. Ltd (2)
 I2IT Pvt.
 School for Golden Jubilee School Trust
 Badri Narayan Barvale College
 Tata Institute (2)
 Polytechnic College
 S.N.D.T. Women's University
 St. Xavier Educational Institute
 Horizon School
 Al Adel et Oum Al Fadel Schools (2)
 Amity International School & University (2)
 Applied Technical School for Girls

Doha, Qatar
 Kuwait Ville, Kuwait
 Algeria
 Riyadh, KSA
 Hyderabad, India
 Mumbai, India
 India
 Trivandrum, India
 Allahabada, India
 Orissa, India
 New Delhi, India
 Pune, India
 Pune, India
 Bangalore, India
 Doha, Qatar
 Tema, Ghana
 India
 Hyderabad, India
 India
 Hyderabad, India
 Bangalore, India
 Pune, India
 Pune, India
 India
 Pune, India
 Maharashtra, India
 Maharashtra, India
 India
 Mumbai, India
 Mumbai, India
 Mumbai, India
 Dubai, UAE
 Al Ain, UAE
 UAE
 Al Ain, UAE



Amity University - Dubai, UAE



El Tarf Univeristy (6000 seats) - Algeria



Pedagogy University (20,000 seats) - Sidi Abdellah, Algeria



Birla Institute - Goa, India



Delhi Public School - Tema, Ghana



Gambia University - Gambia



Secondary School - Al Ain, UAE



University of Doha, Pharmacy College - Doha, Qatar



Univeristy of Kuwait, Kuwait



Commander College - Riyadh, Kingdom of Saudi Arabia



Amity International School - Al Bahia, Abu Dhabi

Group Projects



HOSPITALITY:

Hotel Shatt Al Arab - 210 Rooms, 8 Villas
 Hotel Marriott - 207 Rooms and 96 Apartments
 Hotel Marriott - 420 Rooms and Lulu Mall
 Hotel Hilton - 300 Rooms
 Hotel Hilton - 200 Rooms
 Hotel Hilton - 204 Rooms
 Hotel Hilton Garden Inn - 142 Rooms
 Hotel Lalit
 Hotel HBN
 Hotel Radisson
 Hotel Great Eastern Expansion
 Hotel Taj
 Hotel Kohinoor & Office Building
 Hotel Meringue
 Hotel Edafah Suites - 98 Serviced Apartments
 Hotel Kabul Serena
 Hotel Crowne Plaze, Former Gulf Hotel and Resort
 Hotel Al Sawadi Holiday Resort - 100 Rooms
 Hotel Mascate Intercontinental - Renovation Phase 1
 Hotel Taj Intercontinental - 600 Rooms
 Hotel Oberoi Hilton - 639 Rooms
 Hotel Maurya Sheraton - 440 Rooms
 Hotel Grand Hyatt - 227 Rooms
 Hotel Grand - 200 Rooms
 Hotel Grand - 244 Rooms
 Hotel Grand Eastern - 244 Rooms
 Hotel Ds Group
 Hotel Bell Tower - 100 Rooms
 Hotel Lemon Tree - 275 Rooms
 Hotel Mattham
 Hotel Chancery
 Hotel Zuri
 Hotel Marriott, Diplomatic Quarter
 Hotel Fairmont Bab al Bhar - 320 Rooms & 24 villas
 Hotel Marriott - 314 Rooms & 64 Apartments
 Hotel Rotana Centro - 245 Rooms
 Hotel Taj Grandeur - 200 Rooms
 Rove Hotel - 480 Rooms (Al Wasl)
 Rove Hotel - 420 Rooms (Zabeel)
 Rove Hotel - 270 Rooms (Port Saeed)
 Rove Hotel - 286 Rooms (Oud Metha)
 Rove Hotel - 270 Rooms (Jafliya)
 Rove Hotel - 384 Rooms (Dubai Marina)
 Hotel Hyatt Place -311 Rooms & 355 Apartments

Basa, Iraq
 Erbil, Iraq
 Kerela, India
 Lagos, Nigeria
 Sierra Leone
 Riyadh, KSA
 Lagos, Nigeria
 Ahmadabad, India
 Punjab, India
 Assam, India
 Kolkata India
 Guwahati, India
 Hyderabad, India
 Mumbai, India
 Riyadh, KSA
 Kabul, Afghanistan
 Muscat, Oman
 Oman
 Oman
 Mumbai, India
 Mumbai, India
 New Delhi, India
 Mumbai, India
 Chandigarh, India
 Jaipur, India
 Kolkata, India
 Kolkata, India
 Bangalore, India
 Hyderabad, India
 Bangalore, India
 Bangalore, India
 Bangalore, India
 Riyadh, KSA
 Abu Dhabi, UAE
 Abu Dhabi, UAE
 Dubai, UAE
 Dubai, UAE
 Dubai, UAE
 Dubai, UAE
 Dubai, UAE
 Dubai, UAE
 Dubai, UAE
 Dubai, UAE
 Dubai, UAE



Hilton Hotel - Riyadh, KSA



Oberoi Hilton Towers - Mumbai, India



Taj Intercontinental - Mumbai, India



Hotel Taj Grandeur - Dubai, UAE



Transcorp Hilton - Lagos, Nigeria



Marriott Bloom - Abu Dhabi, UAE



Rove Hotels (6) - Dubai, UAE



Marriott Hotel - Erbil, Iraq



Hilton Garden Inn - Lagos, Nigeria



Edafah Suites - Riyadh, KSA



Hotel Cidade de Goa - Goa, India



Fairmont Bab Al Bhar - Abu Dhabi, UAE



Hyatt Place - Dubai, UAE



Marriott - Kingdom of Saudi Arabia



Dubai Inn (6) - Dubai, UAE



Hilton Freetown - Freetown, Sierra Leone



Shatt Al Arab - Basra, Iraq



Group Projects

COMMERCIAL:

ML Office Tower (2B+G+M+3P+28)	Colombo, Sri Lanka	Municipality Building	Muscat, Oman
AHK Office Tower (1B+G+M+ 8P+27)	Damman, KSA	Seat of Government and Residency	Accra, Ghana
Al Reziza Tower (1B+G+M+3P+27)	Al Khobar, KSA	IT & Biotech Village	Abidjan, Côte d'Ivoire
King Abdullah Financial District (p 4.10)	Riyadh, KSA	IT Park for Phoenix Info City	Hyderabad, India
King Abdullah Financial District (p 4.11)	Riyadh, KSA	IT Park Phase 2 and Phase 3 for TCS	Orissa, India
Le Boulevard Office Building	Doha, Qatar	IT Park Phase 1 for TCS	Hyderabad, India
Al Fatah Tower (G+32)	Benghazi, Libya	Cyber Tower	Bene Triangle, Mauritius
Bab Tarabulus (2B+G+27)	Tripoli, Libya	Reliance IT Park	Mumbai, India
New national Assembly Building	Banju, Gambia	IBM Software Development Complex	Kolkata, India
Les Pailles Exposition	Port Louis, Maurice	Global Development Centre	Kolkata, India
Barwa Commercial Avenue	Doha, Qatar	DLF Info City	Chennai, India
Aditya Brila Centre	Mumbai, India	Software Development Complex	Chennai, India
Peninsula Business Park, Lower Parcel	Mumbai, India	Software Development Complex	Noida, India
Century Mills Commercial Twin Towers	India	Software Development Complex	Bangalore, India
Indiabulls Blu Comm. and Residential (30)	Mumbai, India	"Inventor" IT Park	Bangalore, India
Indiabulls Blu Comm. and Residential (46)	Mumbai, India	I-Flex Solutions Ltd	Bangalore, India
Indiabulls Blu Comm. and Residential (50)	Mumbai, India	Millinea Software Complex	Bangalore, India
Indiabulls Blu Comm. and Residential (52)	Mumbai, India	Techno polis Park Nelco Complex	Mumbai, India
Reliance Global Headquarters	Mumbai, India	Software Facility	Pune, India
Essar Office Complex	Mumbai, India	Ozone Infotech Park	Pune, India
World Trade Center	Mumbai, India	ILABS Centre Building for ILABS	Hyderabad, India
Reserve Bank of India	Mumbai, India	Campus Building for Kanbay	Hyderabad, India
State Bank of India	Mumbai, India	Facility for Dell	Hyderabad, India
Crescent Towers	Mumbai, India	Facility for Vanenburg	Hyderabad, India
Sterling Towers	Mumbai, India	Park for DLF	Hyderabad, India
Infrastructure Leasing and Financial Serv.	Mumbai, India	Facility for West End Capital	Hyderabad, India
Bank of India	Mumbai, India	Park for Reliance Communications	Hyderabad, India
Citibank	Mumbai, India	Campus Buildings for Virtusa	Hyderabad, India
Thaper House	Mumbai, India	Phase 2 & 3 Buildings CMC Ltd.	Hyderabad, India
Commercial Building	Qurum, Oman	Business Park for TSI	Hyderabad, India
Commercial and Residential Building	Al Khuwair, Oman	Business Park for Franklin Templeton	Hyderabad, India
Commercial and Residential Development	Ruwi, Oman	Reliance Corporate IT Park	Mumbai, India
National Bank of Oman	Oman		
Oman House	Oman		
Royal Yacht Squadron	Muscat, Oman		
Royal Guest House Complex	Muscat, Oman		
Majlis of National Heritage and Culture	Muscat, Oman		
Ministry of Diwan Affairs	Muscat, Oman		
Saudi Electric Company HQ Complex	Riyadh, KSA		
Park Towers (2) - (3B+7P+52)	Dubai, UAE		
Golden Crest Tower (5B+G+39)	Dubai, UAE		
LANDMARK Headquarters (3B+G+7P+19)	Dubai, UAE		
AMESCO Office Building	Dubai, UAE		
Dubai Media City Office Building	Dubai, UAE		



Tata Consultancy Services - Odisha, India



National Assembly Building - Banjul, Gambia



Flag Staff House and Seat of Government - Accra, Ghana



VITIB IT - Grand Bassam, Cote D'Ivoire



Business Park at Dubai Hills - Dubai, UAE



Abu Dhabi Media Company - Dubai, UAE



Exhibition Centre - Les Pailles, Mauritius



Museum of Oman - Oman



Reliance IT Centre - Mumbai, India



Sabic Jubail Main Building - KSA



Al Shareef Headquarters - Doha, Qatar



AKH Tower - Damman, KSA



King Abdullah Financial Q. - Riyadh, KSA



Damac Park Towers - Dubai, UAE



Reliance Office - Mumbai, India



Le Boulevard - Doha, Qatar



King Abdullah Financial Q. - Riyadh, KSA



Al Reziza - Al Khobar, KSA



Ministry of Labour - Colombo, Sri Lanka



Goldcrest Executive - Dubai, UAE

Group Projects

RESIDENTIAL:

Altair Twin Towers - 2B + G + 70	Colombo, Sri Lanka
Al Abraj Towers (4 Towers) - B+G+7P+31	Doha, Qatar
Reserve Bank of India Residential Tower - G+P+17	Mumbai, India
Reserve Bank of India Residential Tower - G+P+18	Mumbai, India
Reserve Bank of India Residential Staff Housing	Mumbai, India
Deluxe Apartment	Mumbai, India
Deluxe Residential Complex	Mumbai, India
Palace of the Sultan of Oman	Muscat, Oman
Imperial Twin Towers - G+9P+51	Mumbai, India
20,000 Apartments	Kolkata, India
10,000 Apartments	Kpone, Ghana
2,000 Apartments (Setif, Oram, and Mostaganam)	Algeria
1,147 Apartments for Royal Oman Police Housing	Muscat, Oman
1,000 Villas Al Khod Township	Muscat, Oman
Sohar Fertilizer Township Phase 1 & 2	Port de Sohar, Oman
Residential Facility Phase 1 & 2	Wadi Kabir, Oman
Promenade Elita (10 Towers) - G + 19	Bangalore, India
EMAAR Housing (8 Towers)	Hyderabad, India
Skoda Housing	Aurangabad, India
176 Villas Nand Niketan Township for Essar	Hazira, India
Imperial Tower 3 (116 floors)	Mumbai India
Arabian Ranches Golf Vilas - 18 Villas	Dubai, UAE
Suburbia Towers (Two towers)	Dubai, UAE
Meeras Town Houses - 52 Maisons de Ville	Dubai, UAE
Utmost Residential Building - B+G+8+Healthclub	Dubai, UAE
Tijara Town (15 Buildings) - B + 3 + Roof	Dubai, UAE
Mudon Town Houses Phase1 - 348 Villas	Dubai, UAE
Mudon Town Houses Phase2 - 120 TH & 284 Villas	Dubai, UAE
Meeras Development Phase 1 - 300 Villas	Dubai, UAE
Abdulla Al Habbai Project (6 Buildings) - G + 5	Dubai, UAE
Green Community Villas - West Extension	Dubai, UAE
Meeras Development Phase 2 - 9 Buildings	Dubai, UAE



Altair - Colombo, Sri Lanka



Abdulla Al Habbai 330 Apartments - Dubai, UAE



Al Abraj Quarter - Doha, Qatar



Housing Project 2000 units - Setif, Algeria



Housing project 5200 units - Oran, Algeria



Mudon Town Houses - Dubai, UAE



Housing Project 10,000 units - Kpone, Ghana



The Palm Gateway - Doha, Qatar



Expo Village - Dubai, UAE



Imperial Avenue - Dubai, UAE



Suburbia Twin Towers - Dubai, UAE



Thanaya Development - Dubai, UAE



Sun-court Golf Course Towers - India



Imperial Towers - Mumbai, India



Imperial Tower 3 - Mumbai, India



Group Projects

SPORT AND LEISURE:

Eden Garden Cricket Stadium - Capacity 90,000
 Jawaharla Nehru Stadium - Capacity 60,000
 Sahara Cricket Stadium - Capacity 55,500
 Vidarbha Cricket Stadium - Capacity 45,000
 Brabourne Cricket Stadium - Capacity 35,000
 Providence Cricket Stadium - Capacity 15,000
 Robat Stadium - Capacity 12,000
 Buddh International Stadium - Capacity 120,000
 MCA's Cricket Stadium - Capacity 45,000
 The Address Downtown Cigar lounge

Kolkata, India
 New Delhi, India
 Pune, India
 Nagpur, India
 Mumbai, India
 Georgetown, Guyana
 Salalah, Oman
 Pradesh, India
 Pune, India
 Dubai, UAE



Buddh International Circuit - India



Providence Cricket Stadium - Guyana



Eden Garden Cricket Stadium - India



Eden Garden Cricket Stadium - India

Group Projects



INFRASTRUCTURE:

Infrastructural road works	Jeddah, KSA
Tunnel NH-4 between Adoshi and Khandala	India
Thorkarwadi Dam & Works	Maharashtra, India
New International Airport	New Delhi, India
South East Car Park	Doha, Qatar
Buildings of the New Port of Doha	Doha, Qatar
Infrastructure Phase 2	Jeddah, KSA
Meydan Infrastructure (Road and infrastructure)	Dubai, UAE



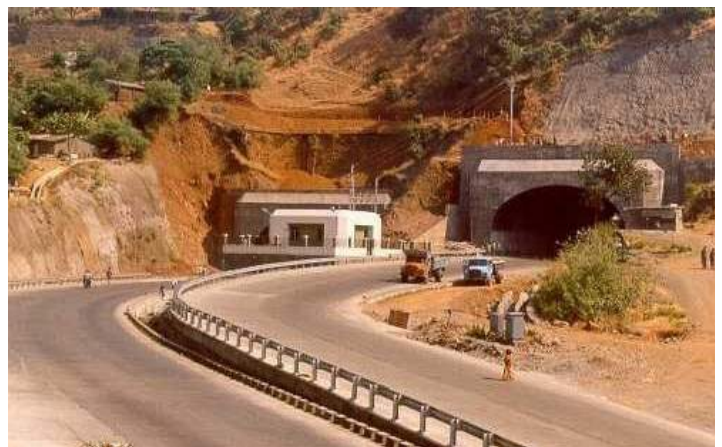
South East Car Park - Doha, Qatar



New International Airport - New Delhi, India



Buildings of the New Port of Doha - Doha, Qatar



Tunnel NH-4 between Adoshi and Khandala - India



Group Projects

RETAIL:

Shatt Al Arab Mall
Marassi Al Bahrain Mall
Lulu Mall
Fun Republic Mall Multiplex
Trillium Mall
Barwa Commercial Avenue (1KM)
Barwa Shopping Centre
Barwa Commercial Plaza
Ishanya Mall
Inox Mall
Inox Mall
GVK One Mall
Spice Mall
E-City Mall
GVK One Mall
Expocity Recreation Centre for ITE Group
Markaz Al Bahja Mall
Jawaharat Al Shattie Mall
Western Extension to Capital Comm. Mall
My City Centre Mall
Springs Village Retail Expansion
Mall of Oman
Khalifa City Shopping Mall

Basra, Iraq
Bahrain
Kerala, India
Lucknow, India
Amritsar, India
Doha, Qatar
Doha, Qatar
Doha, Qatar
Pune, India
Pune, India
Baroda, India
Baroda, India
Noida, India
Coimbatore, India
Hyderabad, India
Hyderabad, India
Seeb, Oman
Qurum, Oman
Qurum, Oman
Sohar, Oman
Dubai, UAE
Oman
Abu Dhabi, UAE



Lulu Mall + 420 Room Marriott Hotel - Kerala, India



Marassi Al Bahrain Mall + Vida Hotel and Residences - Bahrain



Trillium Mall - Amritsar, India



Mall of Oman - Oman



Ishanya Mall - Pune, India



Barwa Commercial Avenue - Doha, Qatar



Barwa Commercial Plaza - Doha, Qatar



Spice Mall - Noida, India

Group Projects



WATER TREATMENT PLANTS:

Thokarwadi Dam	Maharashtra, India
Sewage treatment plant - 40 MLD	Bangalore, India
Sewage treatment plant (2) - 50 & 20 MLD	Bangalore, India
Water treatment plant - 600 MLD	Bangalore, India
Sewage treatment plant - 20 MLD	Bangalore, India
Effluent treatment plant - 130 MLD	Amarkantak, India
Water treatment plant - 530 MLD	Chennai, India
Sewage treatment plant (South Zone) - 95 MLD	Amritsar, India
Sewage treatment plant (North Zone) - 95 MLD	Amritsar, India
Sewage treatment plant (6)	Punjab, India
Sewage treatment plant (3)	Thane, India
Sewage treatment plant - 80 MLD	Maharashtra, India
RCC MPS, IPS & STP	Punjab, India
DM Tank for 1200MW TTP	Orissa, India
Sewage Treatment Plant - 12 MLD	Muscat, Oman
Pipework 60 KM - UG Reservoirs 6000 m3 - Sukhobrishti	Kolkata, India
Various Reservoirs 300-2500 M3 for 1050 MW Power Plant	Odisha, India
Cooling Water Tank for Power Plant - 450 m3	Maharashtra, India
Aeration Tank for Power Plant - 6000 m3	Mumbai, India



Effluent Treatment Plant - India



Sewage Treatment Plant - India



Sewage Treatment Plant - Bangalore, India



Water Treatment Plant - India



Sewage Treatment Plant - India



Water Treatment Plant - India



Group Projects

POWER STATIONS/GENERATION:

Power station for Reliance - 2400 MW
Thermal power station
Thermal power station
Power Station for Tata Hydro Electric
Thermal power station
Independent power generation
Torrent power plant

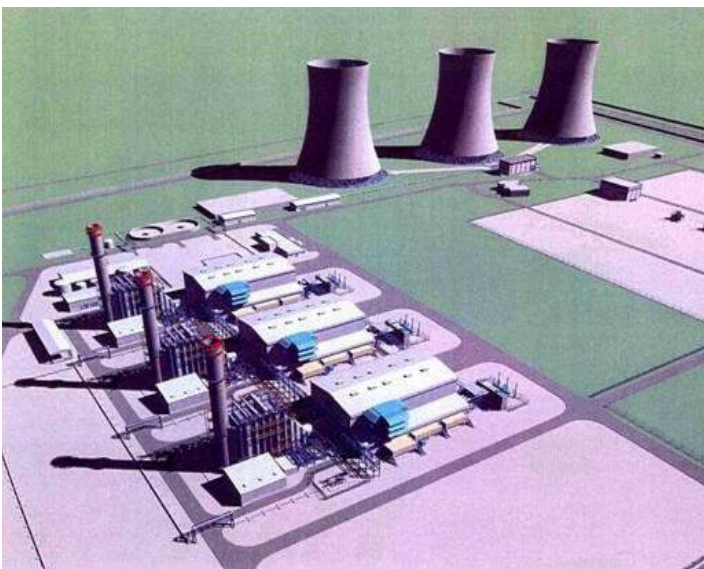
Samalkot, India
Chattisgarh, India
Jojobera, India
Khopoli, India
Mumbai, India
Tamilnadu, India
Surat, India



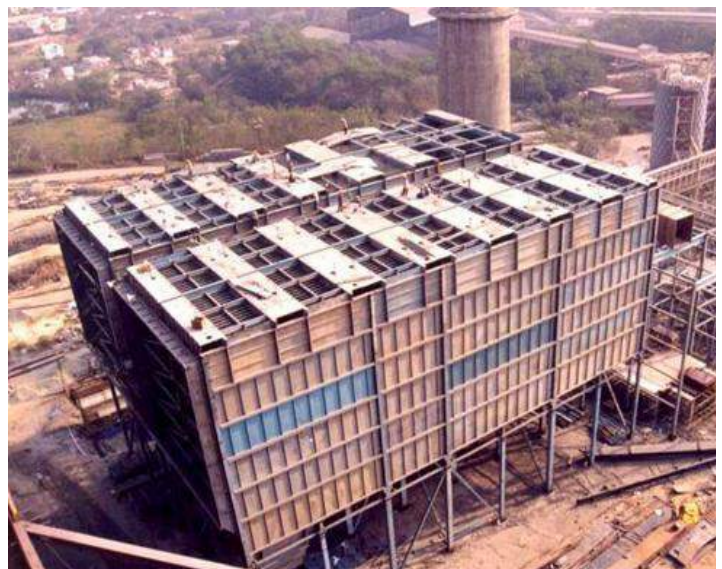
300 MW Thermal Power Station - Chattisgarh, India



Independent Power Generation 105.66 MW - Tamilnadu, India



1130 MW Torrent CCPP - Surat, India



Thermal Power Station (2 x 120 MW) - Jojobera, India

AFCONS



About

Afcons, since 1959, has been a trusted infrastructure construction company across diversified segments. Afcons is a leader in Marine Construction and part of The Shapoorji Pallonji Group since 2000.

Our Vision

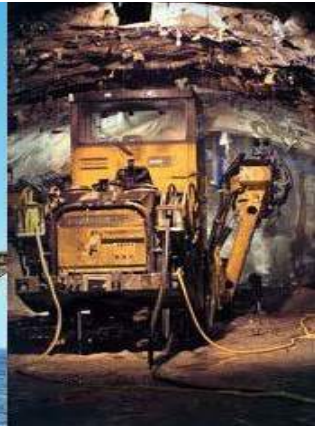
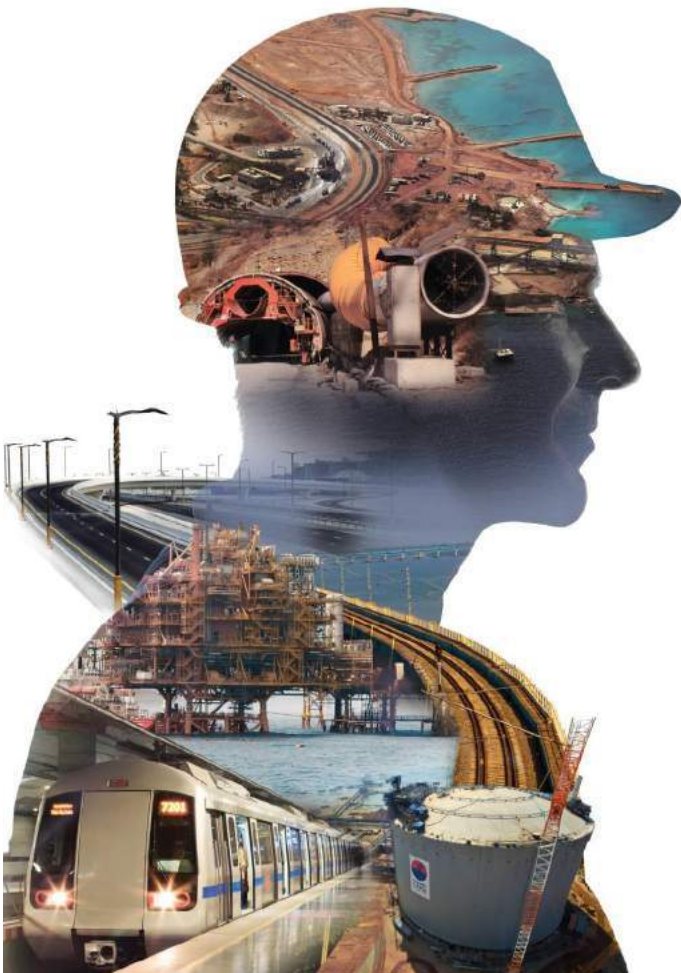
Fostering an environment that helps in the creation of knowledge and its application to work. We seek to excel in all our business activities and strive to build a creative organisation.

Our Mission

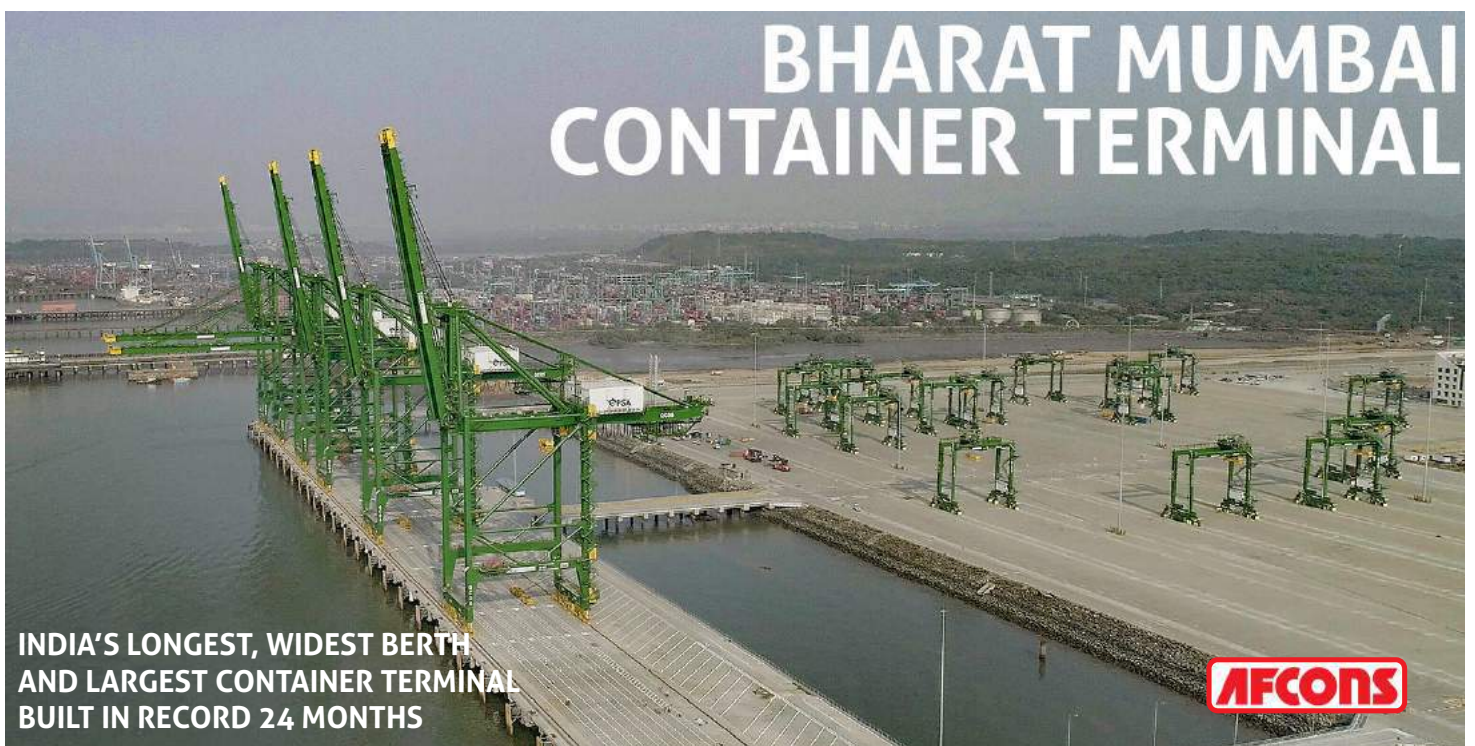
"To be a prominent transnational infrastructure company recognised for business innovations, focused on total satisfaction and enhanced value creation for all its stakeholders"

Strong EPC and Construction Background

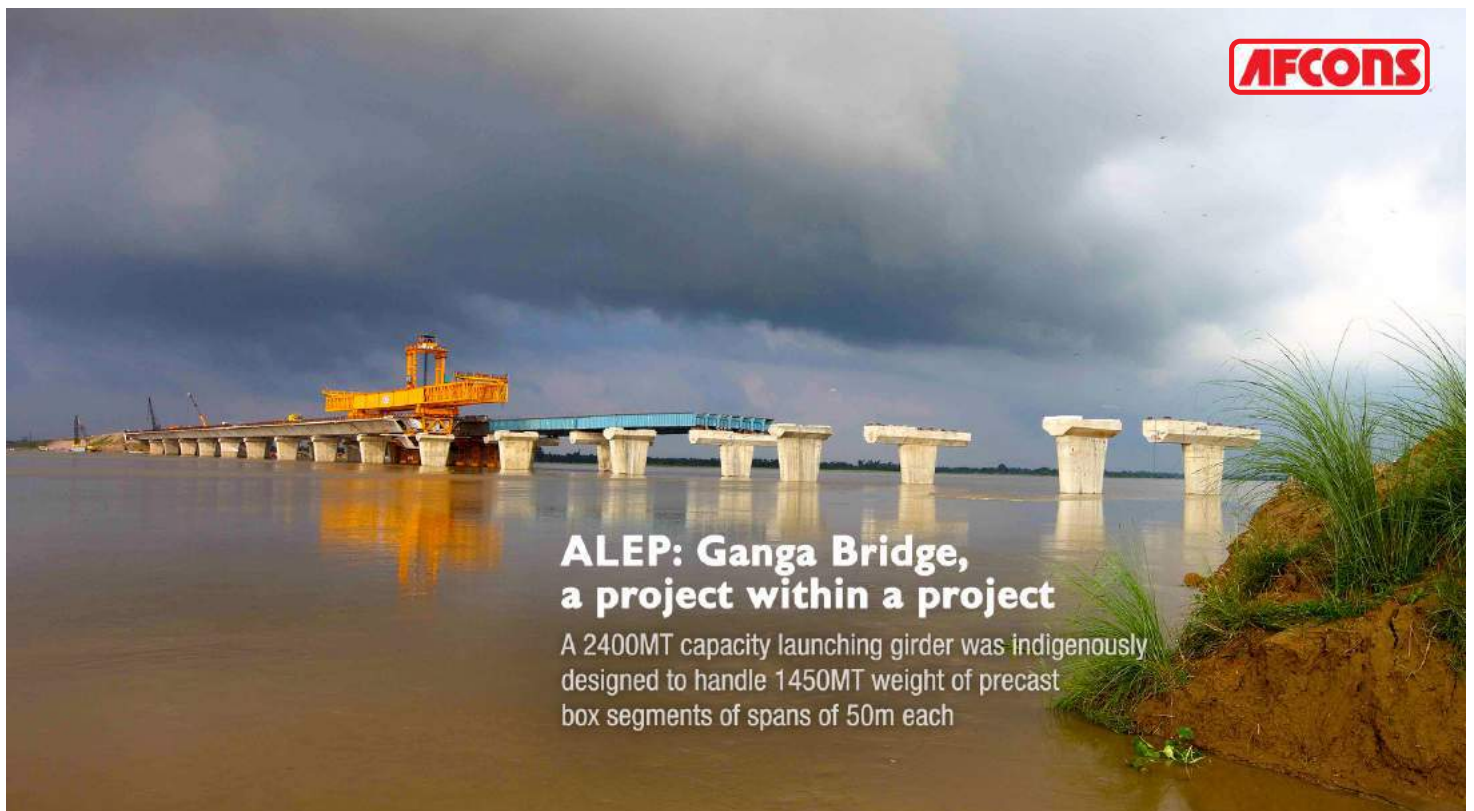
- 180+ Marine Works
- 140+ Bridges, Flyovers, Viaducts
- 4500+ Lane Kilometers of Roads
- 6 LNG Tanks
- 100+ KM Elevated & Underground Metro
- 9 Tunnels and Hydro Works
- 40 General Civil Engineering & Industrial Structures
- 45+ Overseas Projects



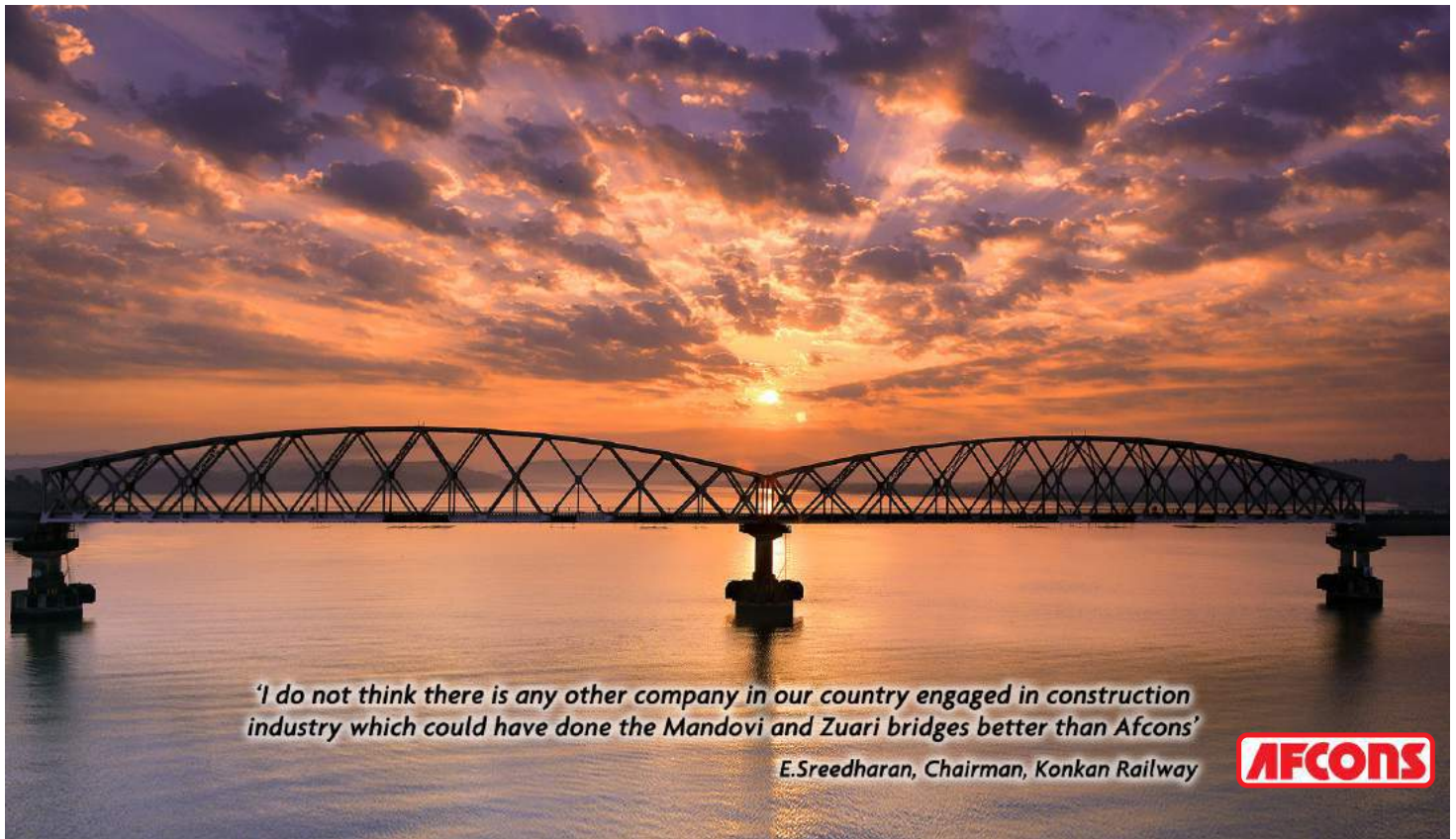
Marine & Industrial Projects



Surface & Transport Projects



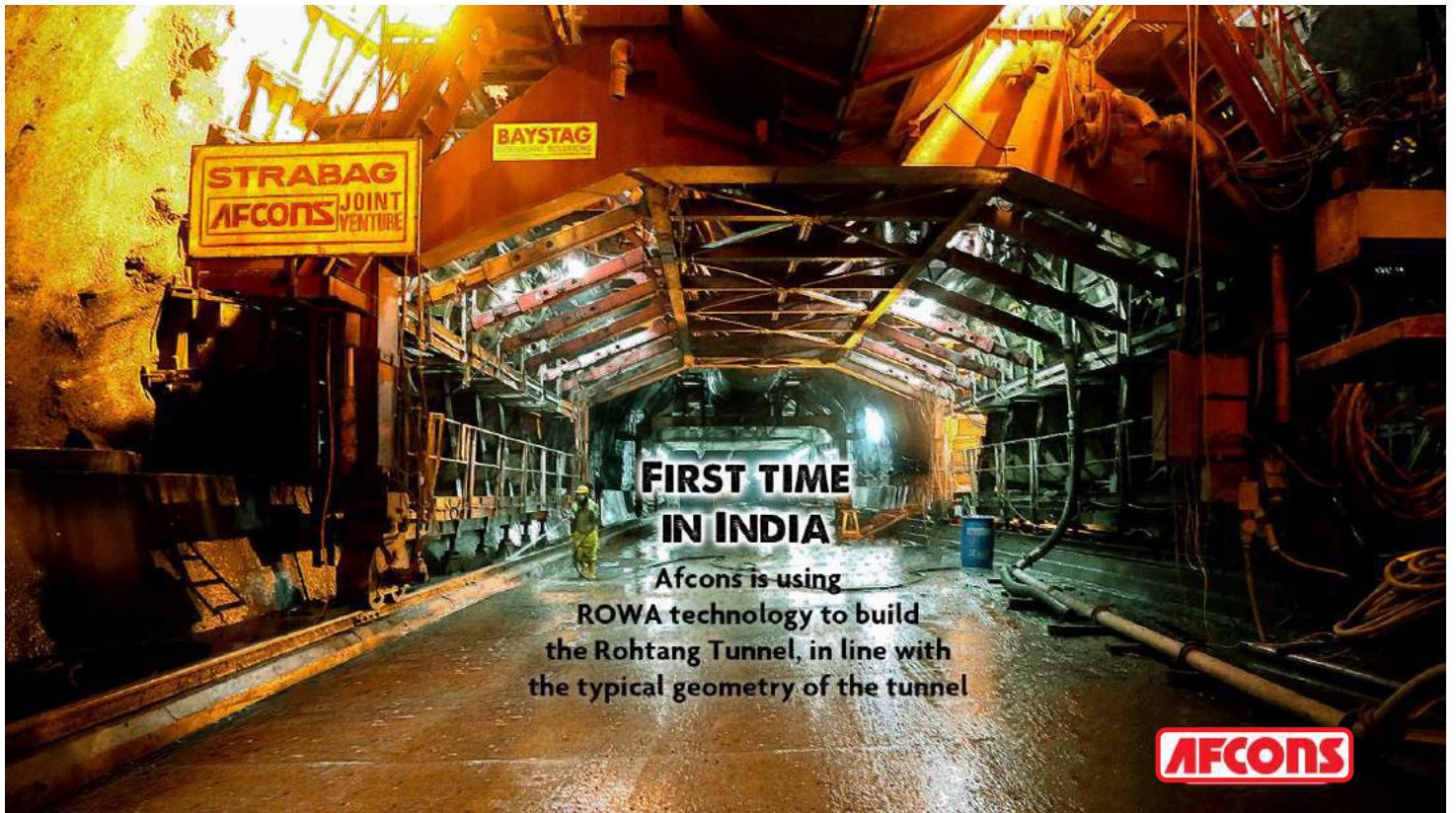
Rail & Metro Projects



Oil and Gas Projects



Underground & Hydro Projects



Sterling & Wilson

STERLING AND WILSON



ESTABLISHED
in 1927



LARGEST
LT Electrical and MEP
contractor in the region



3rd LARGEST HVAC
Contractor in the region



COMMISSIONED
2200 GWp, 2500 GWp
under construction & 500 MWp Confirmed
Order Book**



STRONG PRESENCE
in ME, Africa, South Asia, SE Asia and
Latin America



WORLD'S NO. 1
Pure Play Solar EPC***

** - As on 27th January 2018

*** - As per EPC and O&M provider tracker – March 2017 by IHS Markit



MEP Verticals



Sterling and Wilson has built iconic MEP projects across sectors such as Commercial Complexes, IT Parks, Hospitals, Airports, Hotels, Malls, Multiplexes and Industrial



MEP business has been one of the major contributors to the group's turnover, registering exponential growth from INR 50 crores in the year 2005 to INR 1700 crores in 2017



Today Sterling and Wilson is India's leading MEP contracting company



Strong Presence in Africa, Middle East and growing in other countries



Capable design and engineering team with latest software tools such as MEP Revit and Etap

MEP



Electrical



HVAC



Plumbing



Fire Fighting



IBMS



Industrial EPC



MEP Service



Industrial Fire and Safety (IFS)



Clean Room EPC



Renewables Projects

Renewables



Solar EPC



Roof Top Solar



Wind EnergyS



torage and Hybrid Energy Solutions



Turnkey EPC 132 KV SS and 15 KM Transmission Line for 90 MWp Solar PV Plant - De Aar, South Africa



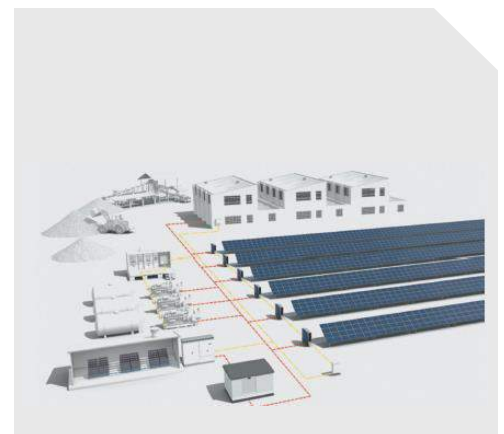
Turnkey EPC for World's Largest single location Solar PV Plant 1177 MWp - Abu Dhabi, UAE



UTILITY SCALE SOLAR EPC



DISTRIBUTED SOLAR + SOLAR MICROGRIDS



STORAGE AND HYBRID ENERGY SOLUTIONS



Other Verticals Projects

Turnkey Data Centers



Power and Cogen Solutions



Transmission and Distribution

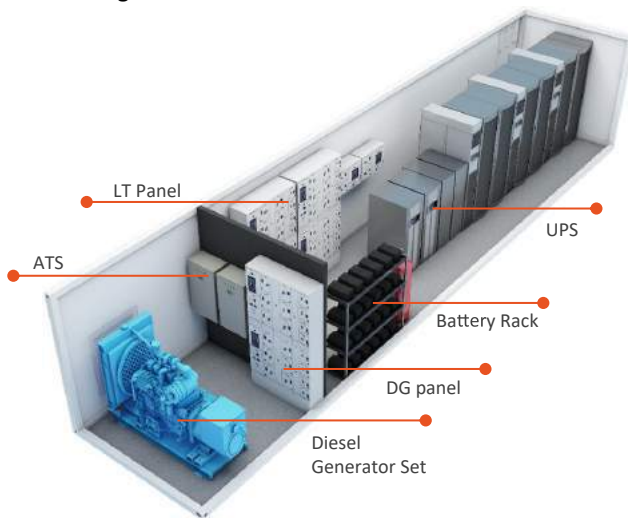


IPP

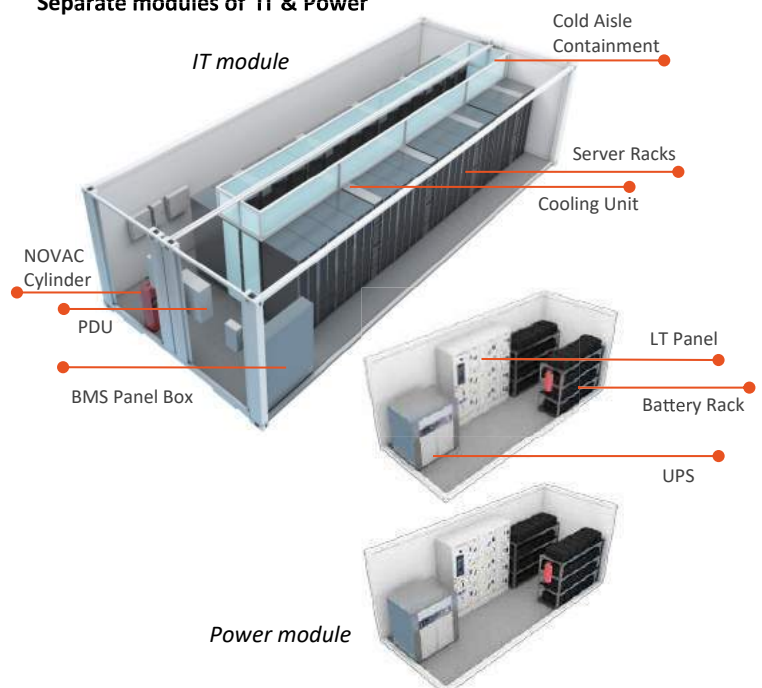


Container Data Center (CDC)

Integrated Modules



Separate modules of IT & Power



SW Manufacturing



Diesel Generators



HT/ LT Panels



Group Awards



**GOLDEN
PEACOCK
AWARD**

for Mahatma
Mandir by
Institute of
Directors in

2016



**MR. SAINI
AWARDED
AS INDIAN
CONSTRUCTION
CEO**

of the year
by Arabian
Business in

2016



**NATIONAL
OCCUPATIONAL
SAFETY & HEALTH
EXCELLENCE
AWARD**

in Sri Lanka by
Ministry of Labor

2016



**CONTRACTOR
OF THE YEAR
AWARD**

QATAR IN
2014

**QATAR
SUSTAINABILITY
AWARD**

in
2014



**GOLDEN
PEACOCK
ENVIRONMENT
MANAGEMENT
AWARD**

by Institute of
Directors in

2014

**SPML RANKED
AMONGST**

**TOP
10**

CONTRACTORS
IN THE UAE

2014

**EXCELLENCE IN
CONSTRUCTION**

By Association of
Consulting Civil
Engineers (India) for
SABIC Research &
Technology Campus,
Sarjapur, Bengaluru in



2013

**EXCELLENCE IN
CONSTRUCTION OF
INDUSTRIAL STRUCTURE**

by Association of Consulting
Civil Engineers (India) for

Subrata Ray Sahara
Stadium, Pune in



2013

**OUTSTANDING CONCRETE
STRUCTURE OF KERALA**

by Indian Concrete Institute
(Kochi Centre) for LuLu
International Shopping Mall,
Kochi in

2013



(Category: Commercial)

**BEST-IN-CLASS LEARNING
& DEVELOPMENT AWARD**

by World HRD Congress
in Best Leadership
Training program
category in 2013

2013



ACHIEVEMENT AWARD FOR BEST CONSTRUCTION PROJECT

by Construction Industry
Development Council
for SABIC Research &
Technology Campus,
Sarjapur, Bangalore in

2012

SAFETY AWARD 3RD PLACE

by National Safety
Council of India for
CMC TCS Synergy
Park, Hyderabad in

2012



CERTIFICATE OF APPRECIATION

by National Safety Council
of India for Peninsula Land
Limited, Mumbai in

2012

SARVAMANGALA AWARD

by Association of Consulting
Civil Engineers (India) for JN
Stadium, New Delhi in

2011



PRASHANSA PATRA
(Safety Awards)
by National Safety
Council of India for
Emaar MGF-Housing,
Hyderabad in

2010



CERTIFICATE OF APPRECIATION

by National Safety Council
of India for Emaar MGF,
Hyderabad in

2010



SAFETY AWARD 3RD PLACE

by National Safety Council
of India for JN Stadium,
New Delhi in

2010



SAFETY AWARD 1ST PLACE

by National Safety Council
of India for General
Motors, Talegaon in

2009

ASIA PACIFIC PROPERTY AWARD

for the Imperial
towers in

2009



TOP BUILDER AWARD



by The
Construction
World in

2007



MOST INTELLIGENT BUILDING AWARD

by International
Community,
US for Ebene
Cyber City IT
Park in Mauritius

2005

MAXIMUM FOREIGN WORKS SECURED IN NEW AREAS

by the Project
Exports Promotion
Council of India in

2005

ACCE L&T FORMWORK AWARD in

2004

At I-flex Park, Bengaluru for
Best use of Formwork in Civil
Engineering



OUTSTANDING INDIAN CONCRETE STRUCTURE

by the American
Concrete Institute
for I-Flex Park,
Bengaluru in

2004

1st
CONSTRUCTION
COMPANY
to receive
ISO 9001
certification
in India





Palace of the Sultan of Oman

Minaean SP Construction Corporation

Suite 2050 - Royal Centre
1055, West Georgia Street
Vancouver, BC, V6E 3P3
Canada

Phone +1 604 684 2181
Fax +1 604 682 4768

Email info@minaeon.com

MINAEAN.COM

Listed on: TSX-V: MSP
FRA: NJAN



MINAEAN 
CONSTRUCTION CORPORATION
AN AFFILIATE OF SHAPOORJI PALLONJI